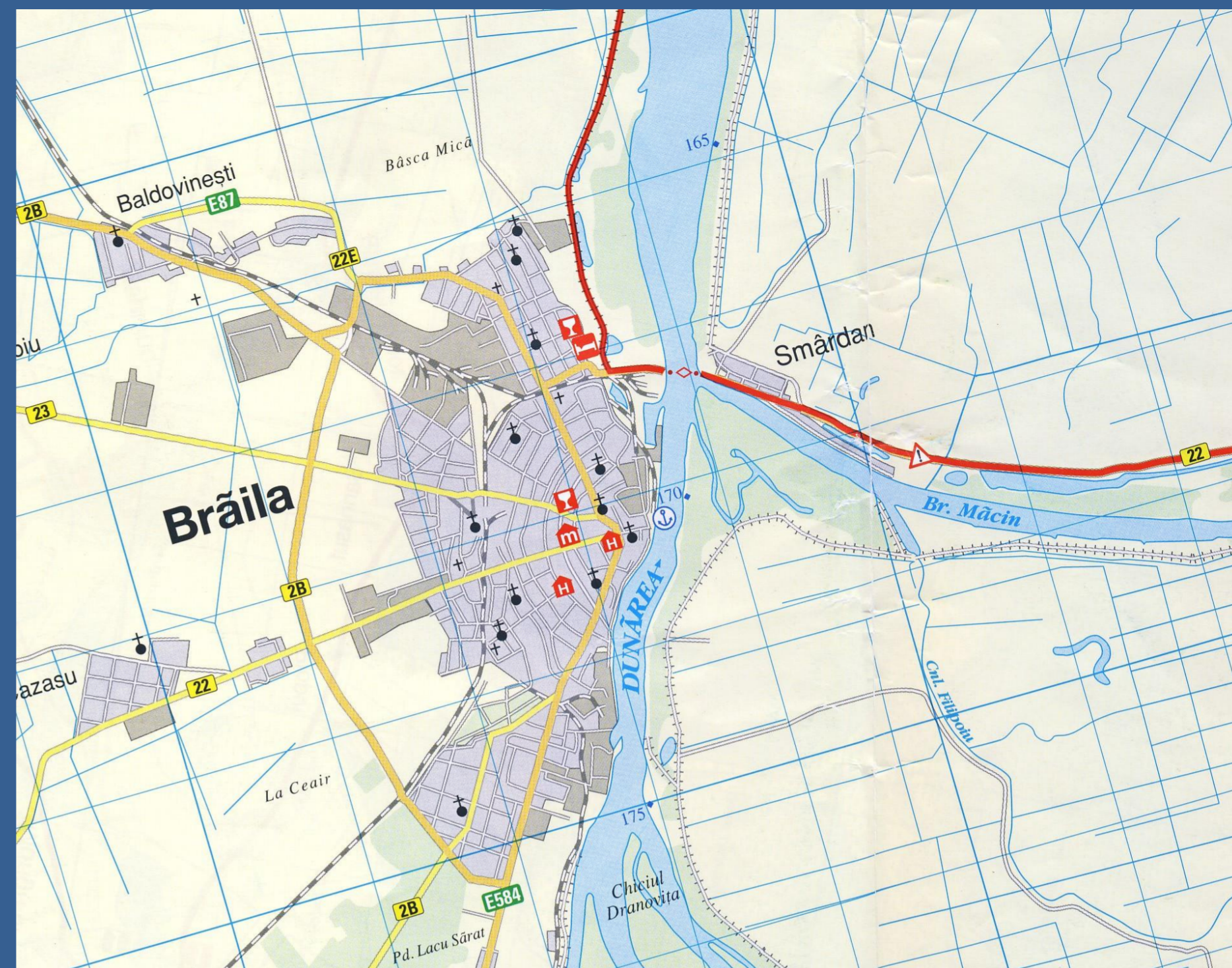
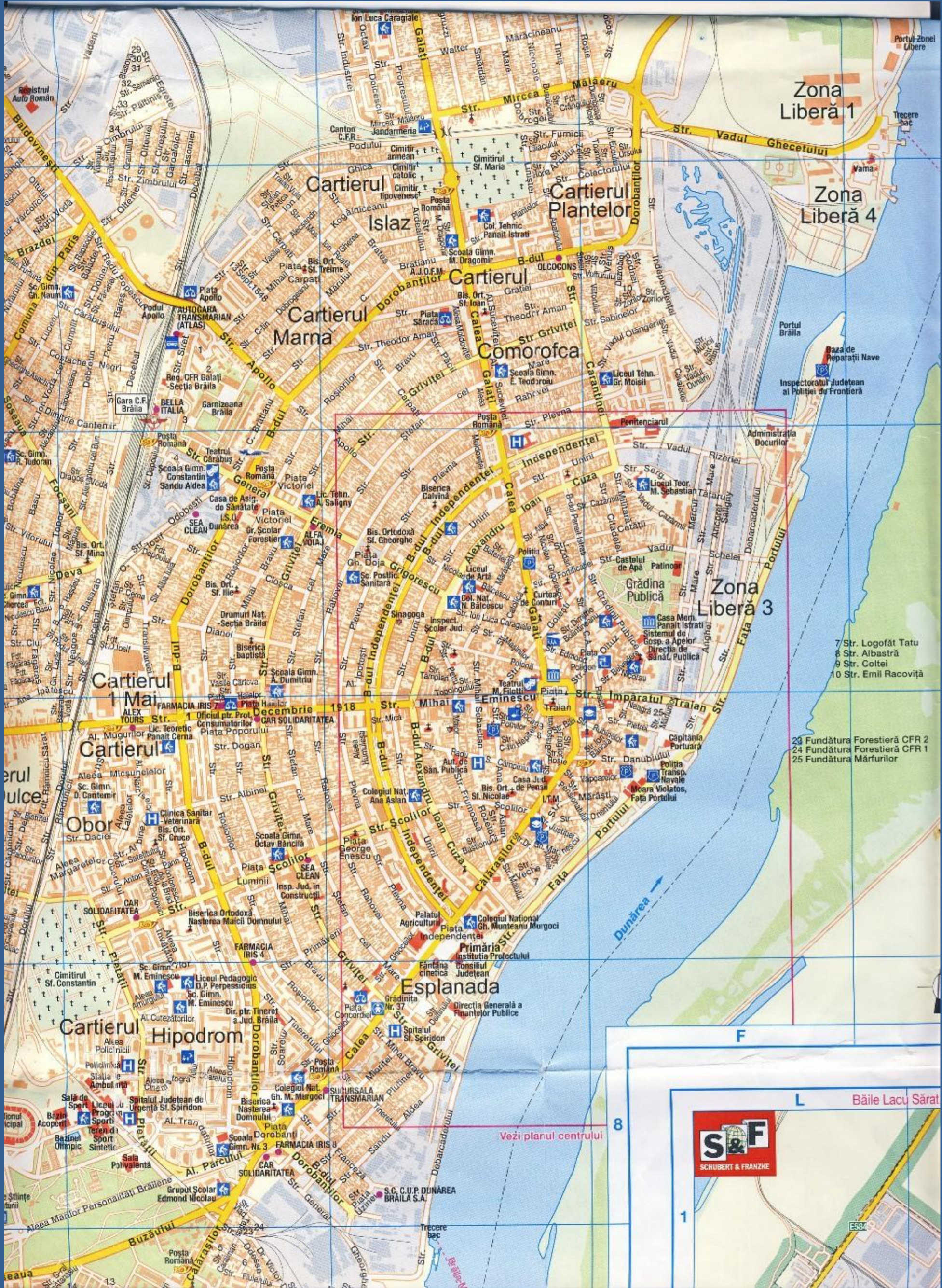


6.-21.5.2019 Donauwanderung

Etappe 14: km170 Braila

Etappe 14: km170 Braila
Noch 170 Flusskilometer bis Sulina. Mehrere Übernachtungen in Braila. In der Stadt gibt es viel zu sehen.
Nach Bukarest fahren regelmäßig Züge. Es ist sehr multikulturelle Stadt.







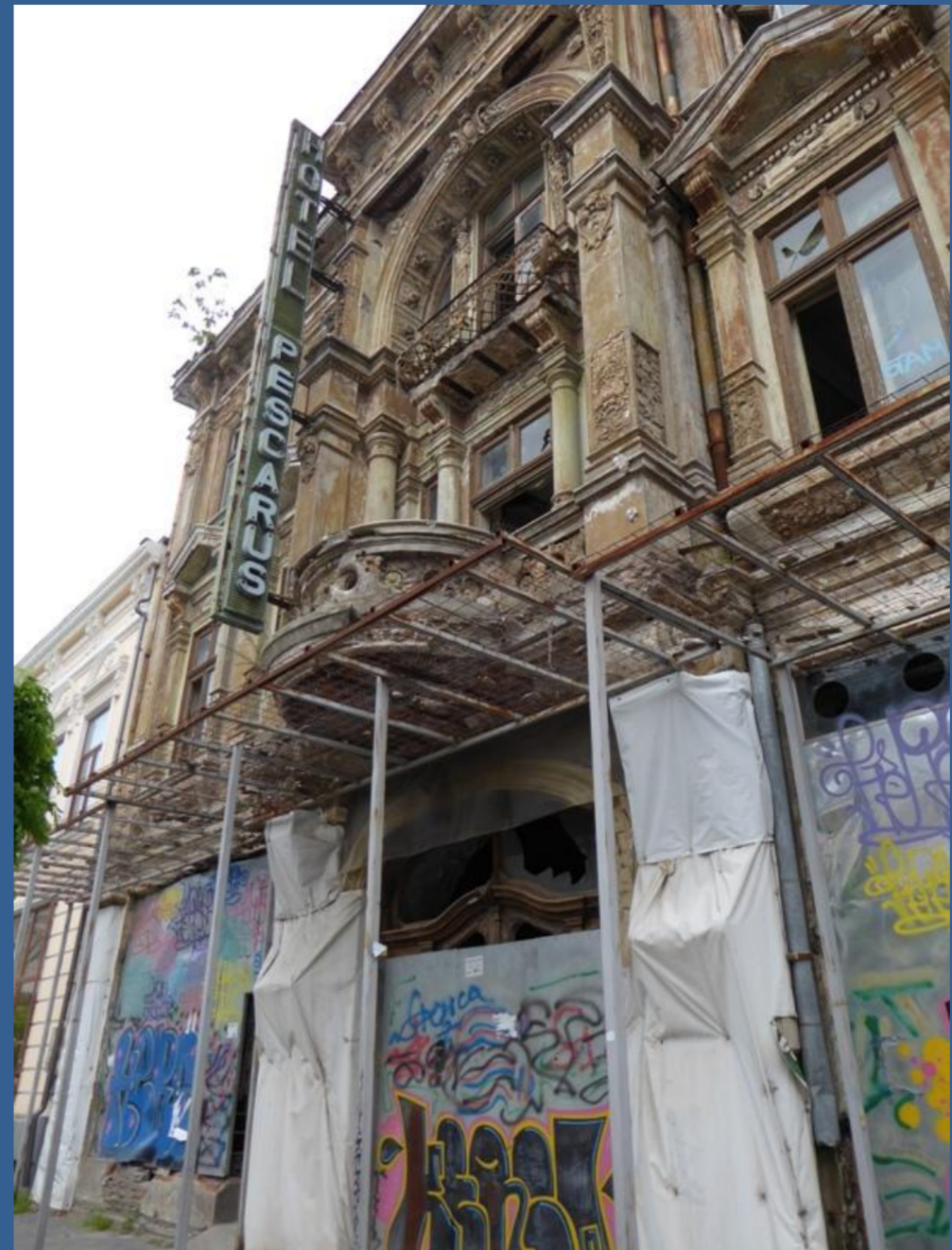


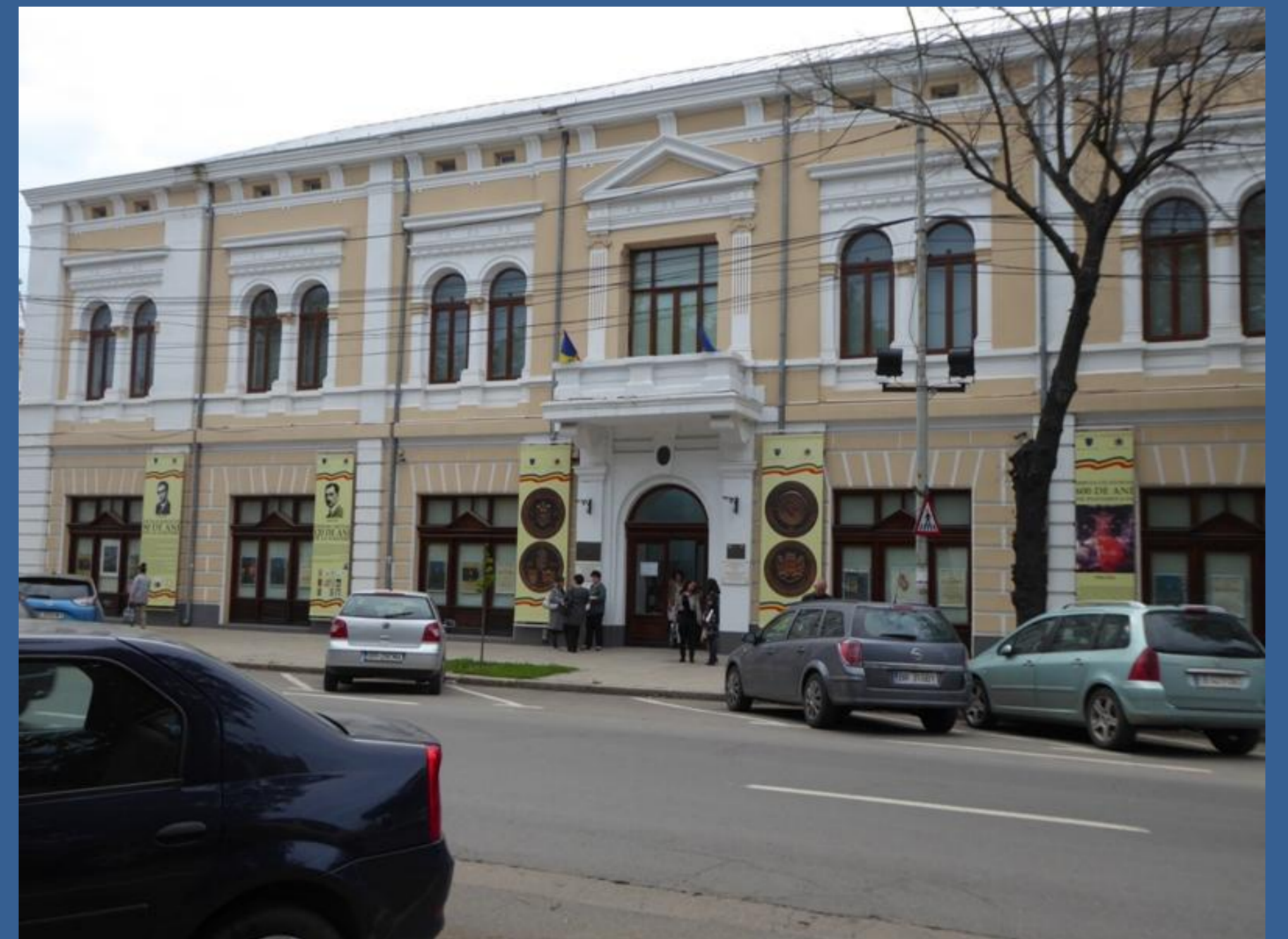






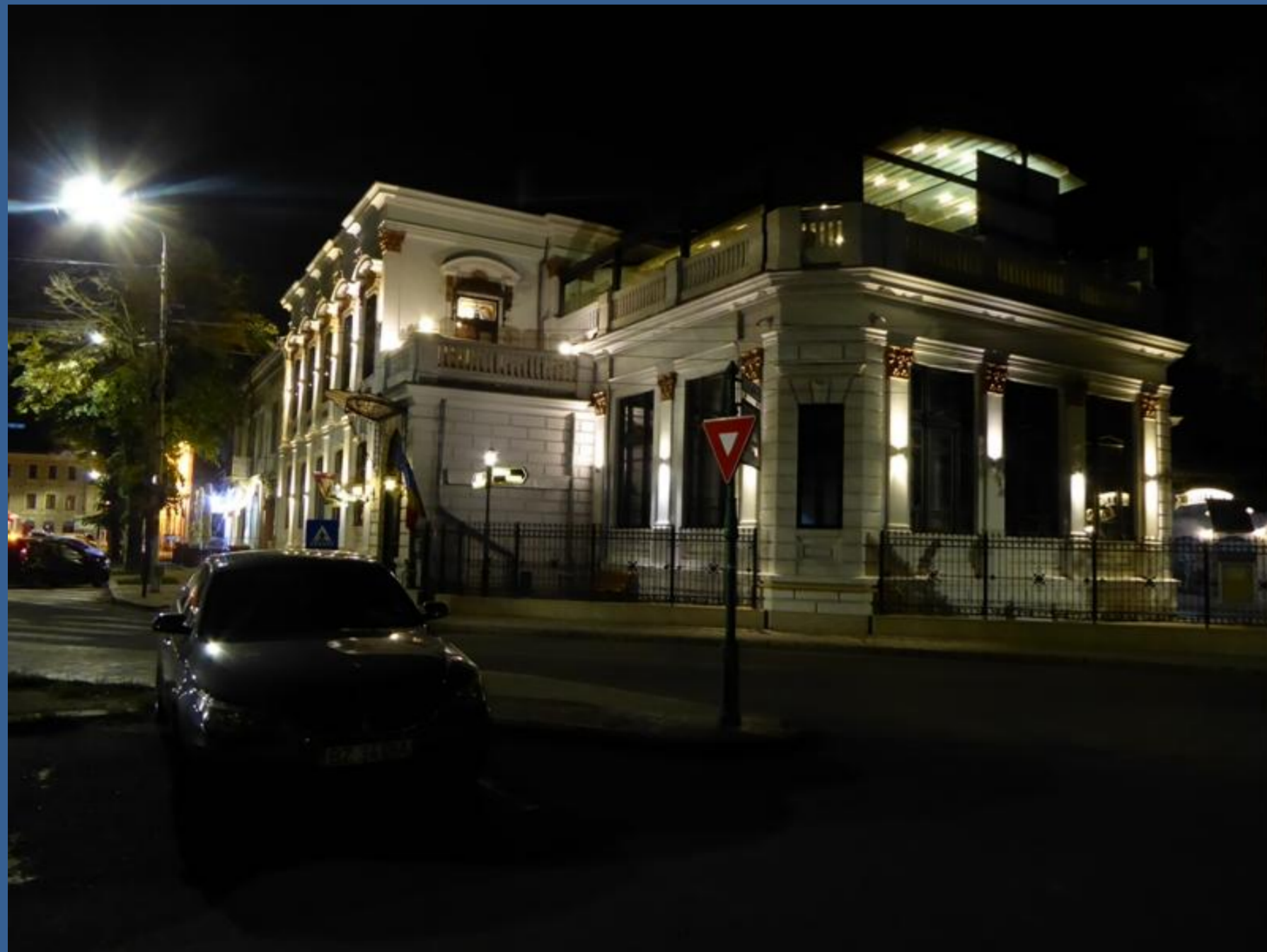


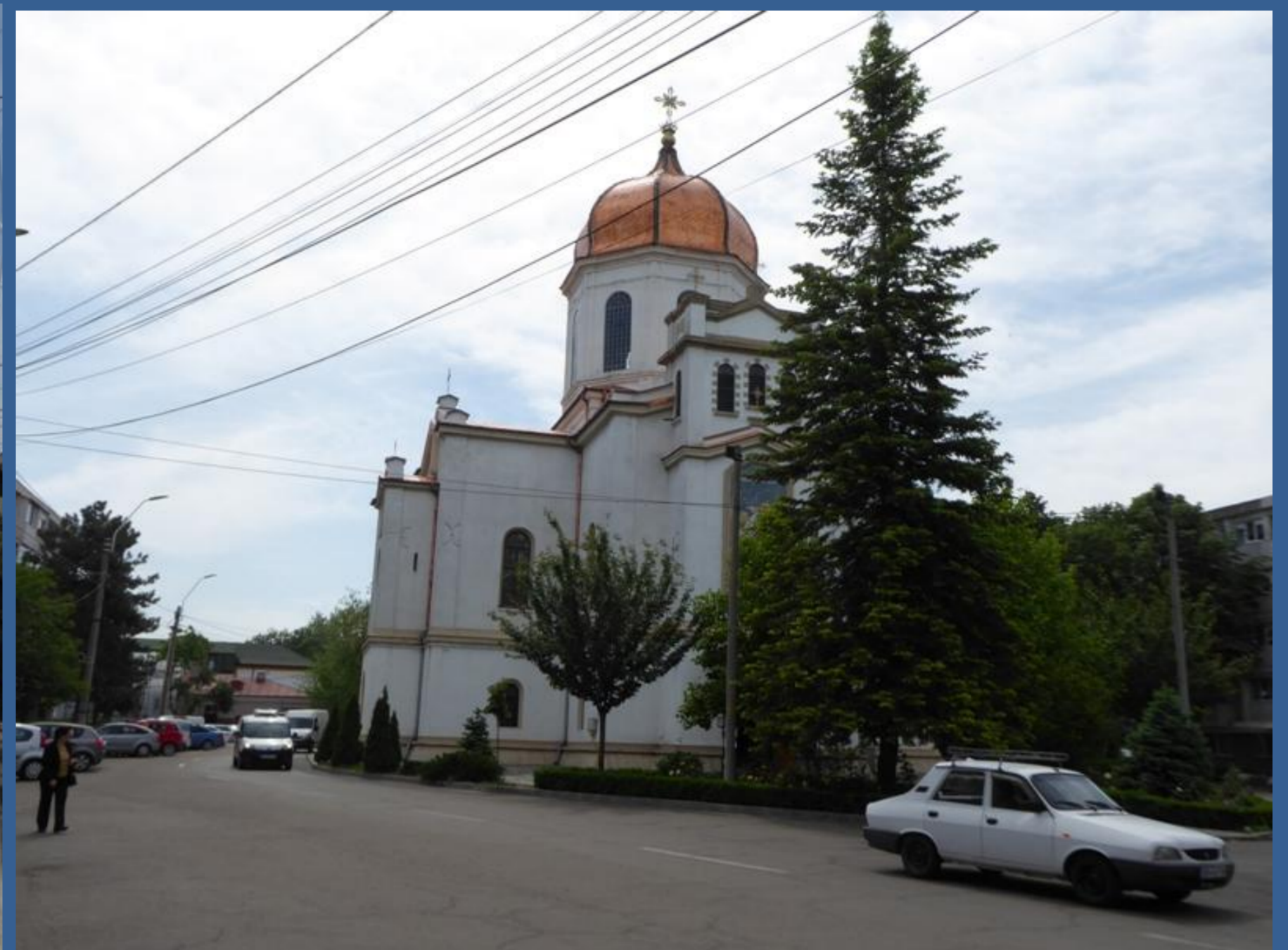


















BANANAS CAVENDISH PREM



BanaFair

FAIR TRADE ORGANIC BANANAS

MIEZ DE NUCA FRANCA
25

MIEZ DE NUCA JUMATA FRANCA
32

MIEZ DE NUCA JUMATA FRANCA
50

MIEZ DE NUCA FRANCA
15

AGENT COMERCIAL

SC APT SA
31

30



